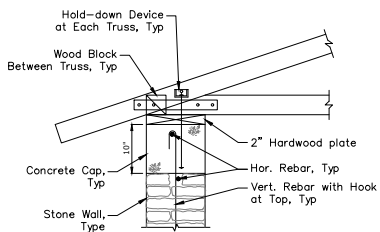
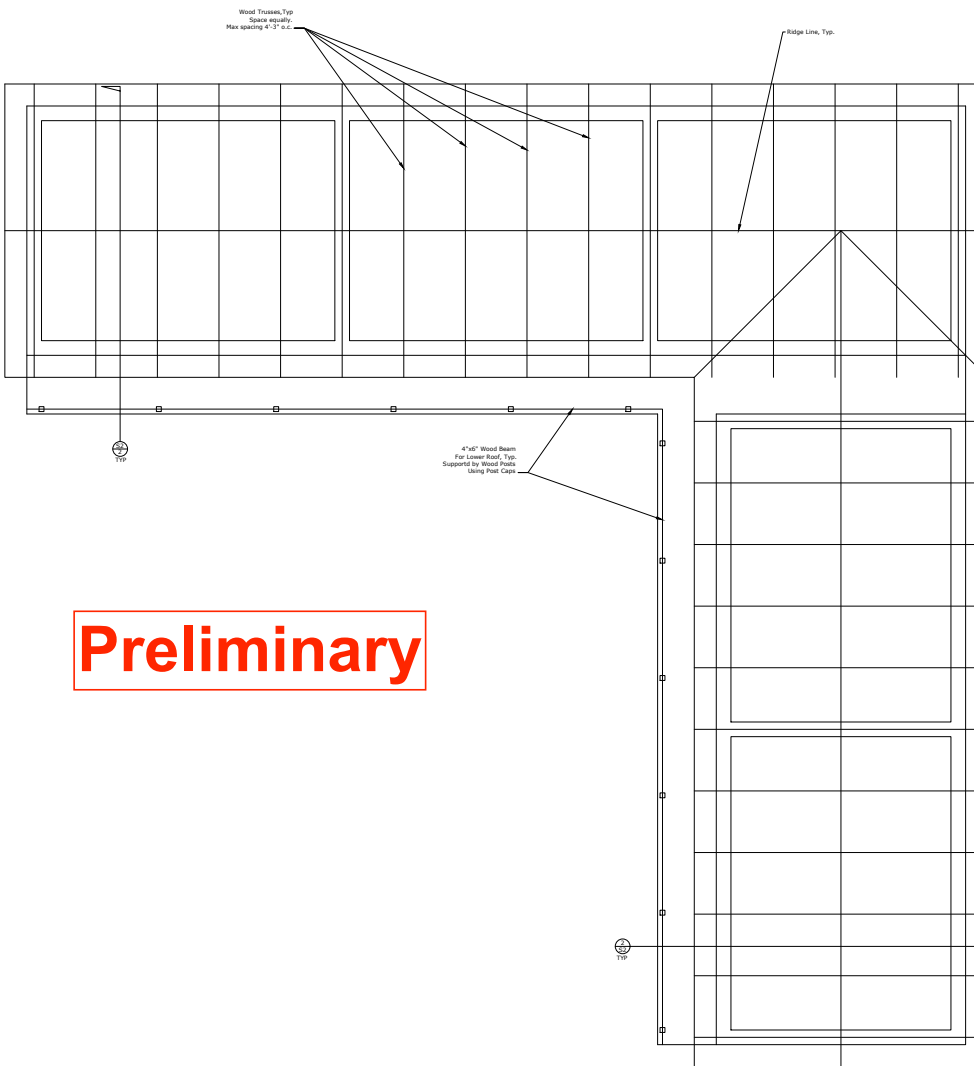


2 TYP TRUSS CONNECTION DETAIL 1"=1'-0"



3 TYP TRUSS CONNECTION DETAIL 1"=1'-0"



Preliminary

1 ROOF PLAN 1/4"=1'-0"

DATE	
REVISIONS	



PROJECT:
New School Building For TRIPITAK PRIMARY SCHOOL (Elementary School)
 Lhuni, Upper Dolpa, Nepal (Near Saldang)

ROOF FRAMING PLAN & DETAILS

DRAWN BY:	SA
CHECKED:	
DATE:	03-30-2021
SCALE:	AS SHOWN
JOB NO.	
SHEET	S3
	OF 3 SHEETS