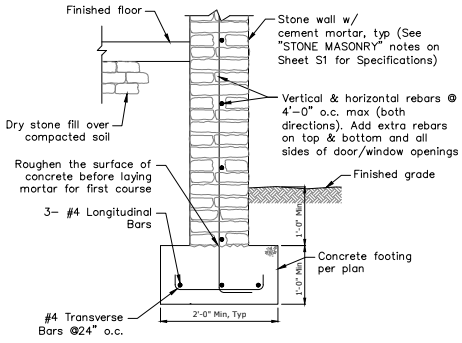
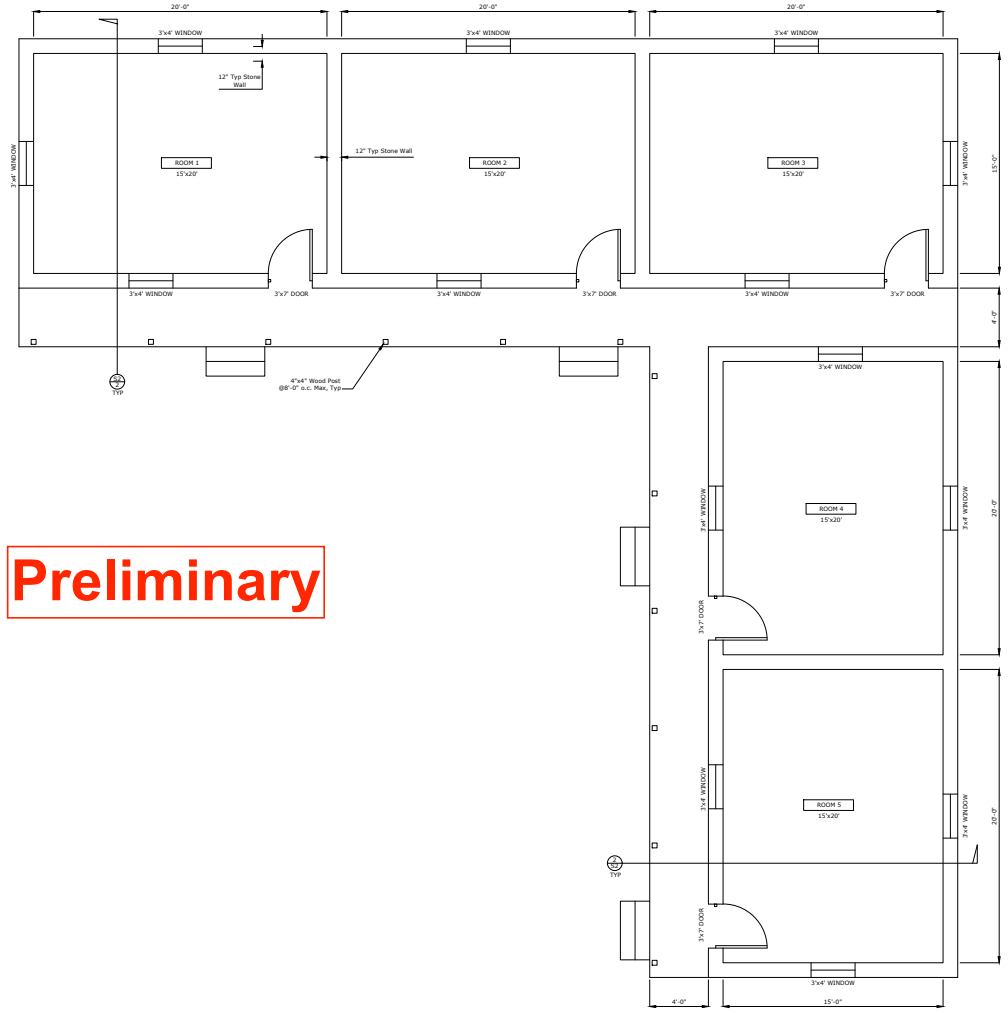


2
S2 TYPICAL BUILDING SECTION
1/2"=1'-0"



Note: Bottom of footing shall be below the frost dept, Min 24" from finished grade

3
S2 TYPICAL WALL AND FOOTING DETAIL
1"=1'-0"



Preliminary

1
S2 FLOOR PLAN
1/4"=1'-0"

DATE	
REVISIONS	

PROJECT:
New School Building For
TRIPITAK PRIMARY SCHOOL
(Elementary School)
Lhuni, Upper Dolpa, Nepal (Near Saldang)

FLOOR PLAN,
SECTIONS & DETAILS

DRAWN BY:	SA
CHECKED:	
DATE:	03-30-2021
SCALE:	AS SHOWN
JOB NO.	
SHEET	S2
	OF
	3 SHEETS